

# Cyclone III (STR Cleat 3 Loop)

## Features

- Third party certification to IEC 61914:2009
- 316L stainless steel base with stainless steel strap
- 24 - 145mm in 15 sizes for trefoil formation / application
- 36 - 118mm in 8 sizes for multicore cables or single core parallel formations
- 21 - 68mm in 8 sizes for quad formations
- Cyclone III short circuit rating of 180kA peak fault
- Operating temperature -40°C to +60°C
- Low Smoke & Fume (LSF) liners as standard
- Combined single (M12) and two bolt (M10) base fixing design



[www.cmp-products.com](http://www.cmp-products.com)

FI502 REV 0 06/16



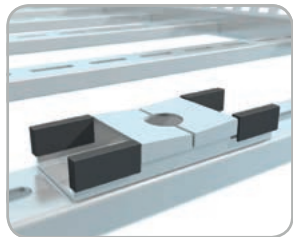
[www.cmp-products.com](http://www.cmp-products.com)

# Cyclone III (STR Cleat 3 Loop)

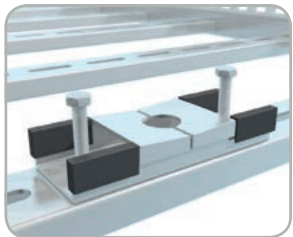


**Cleat Installation  
Instructions**

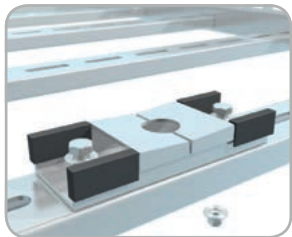
## CMP Cleat Installation Instructions



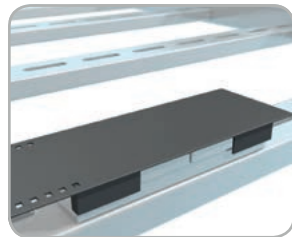
**1** Place cleat base onto ladder in desired location along rung



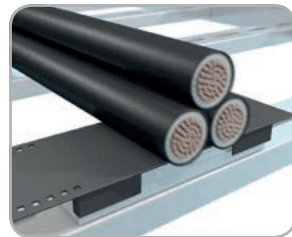
**2** Place fitting(s) (1 x M10 or 2 x M10 - not supplied as standard), through the base and mounting surface



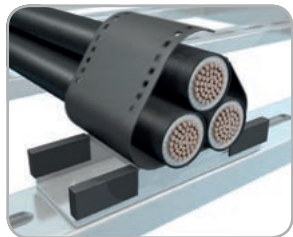
**3** Tighten down to no more than 12N/m torque



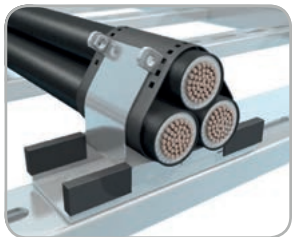
**4** Place liner base on top



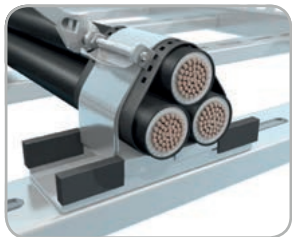
**5** Place cables onto base / liner



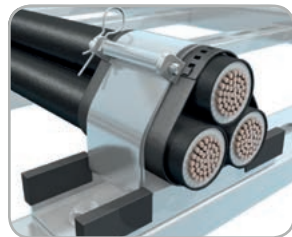
**6** Wrap the liner around the cables and clip together



**7** Place the strap through the base at the back, pull towards the front and loop three times around the cables



**8** Turn the hex key to wind up until tight (resistance is felt when attempting to wind the key). Do not tighten any further as this will only damage the strap.



**9** Align the holes of the winding key and retaining bush and put retaining pin through holes until it clips over bush, locking the winding key in place